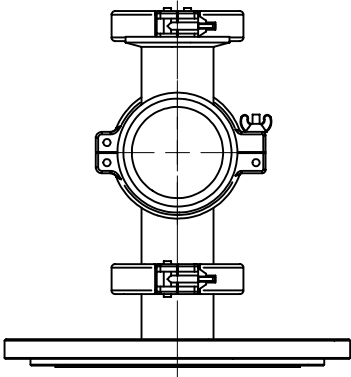
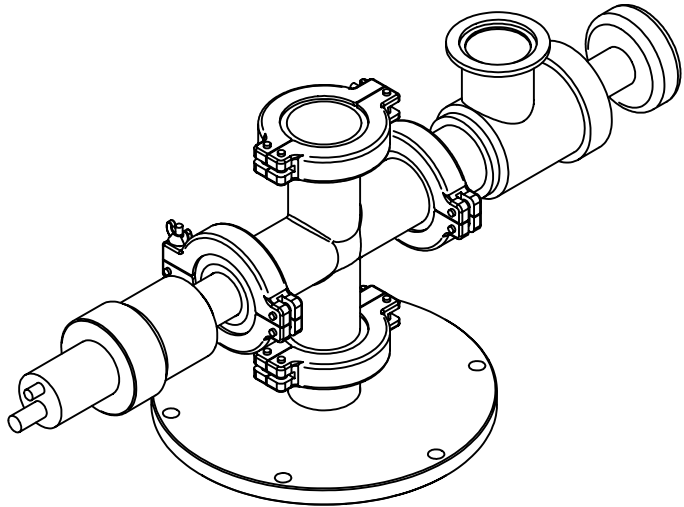
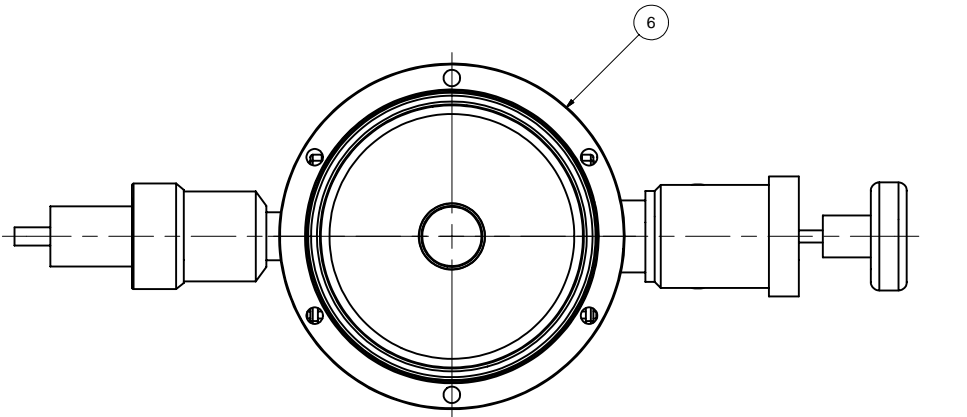
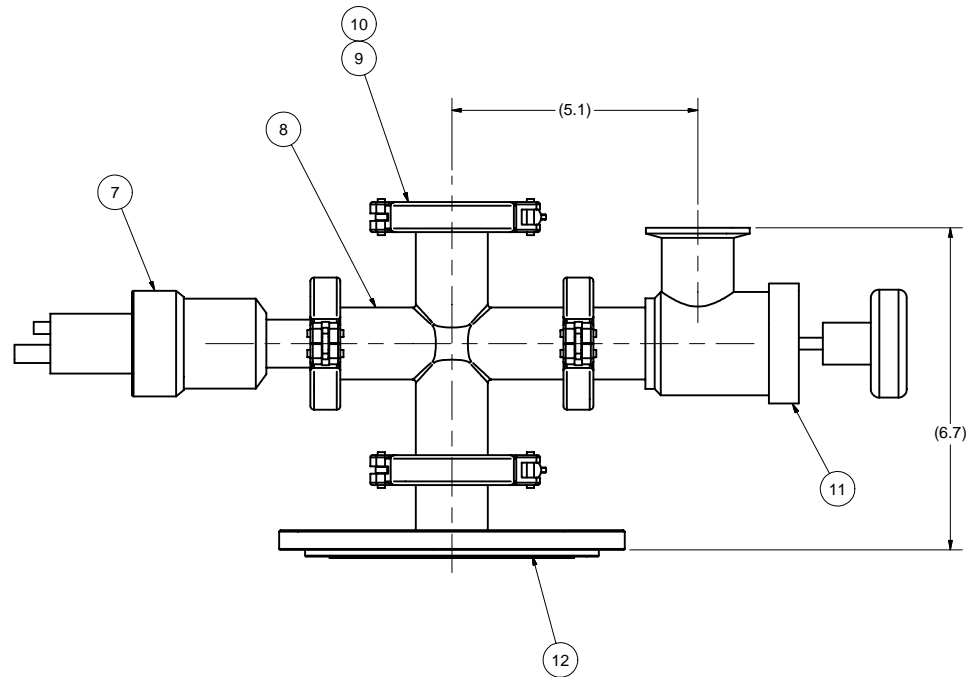
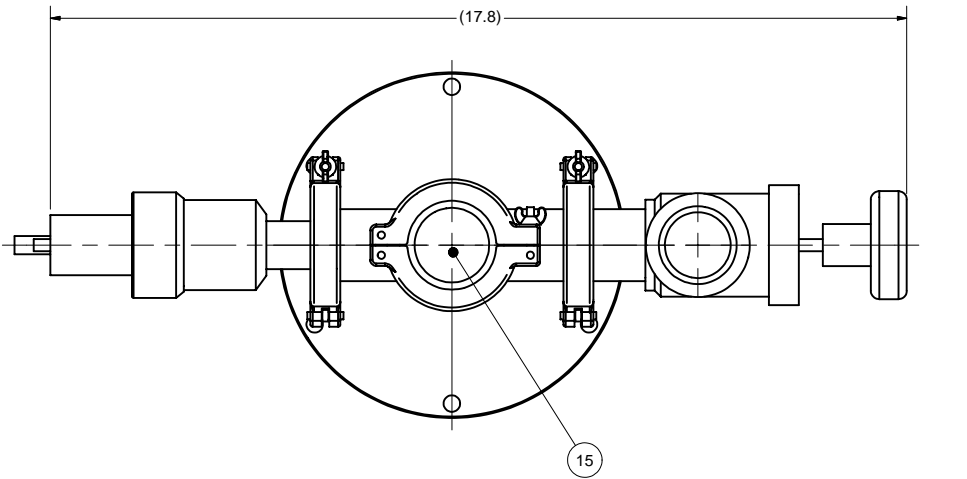


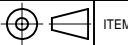


REVISIONS			
SYM.	ZONE	DESCRIPTION	DATE APP.



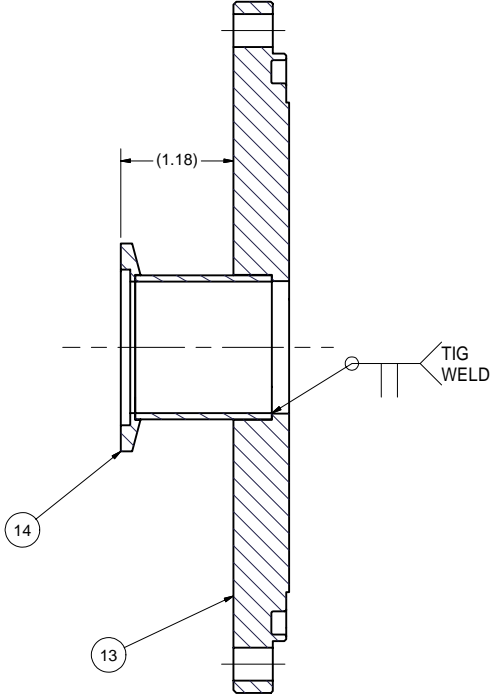
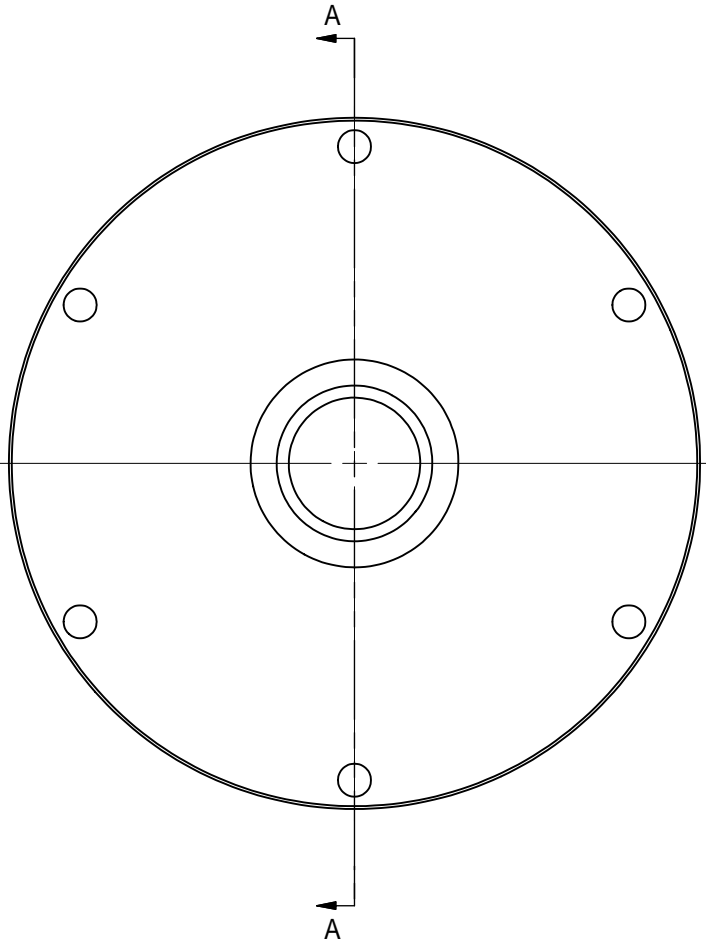
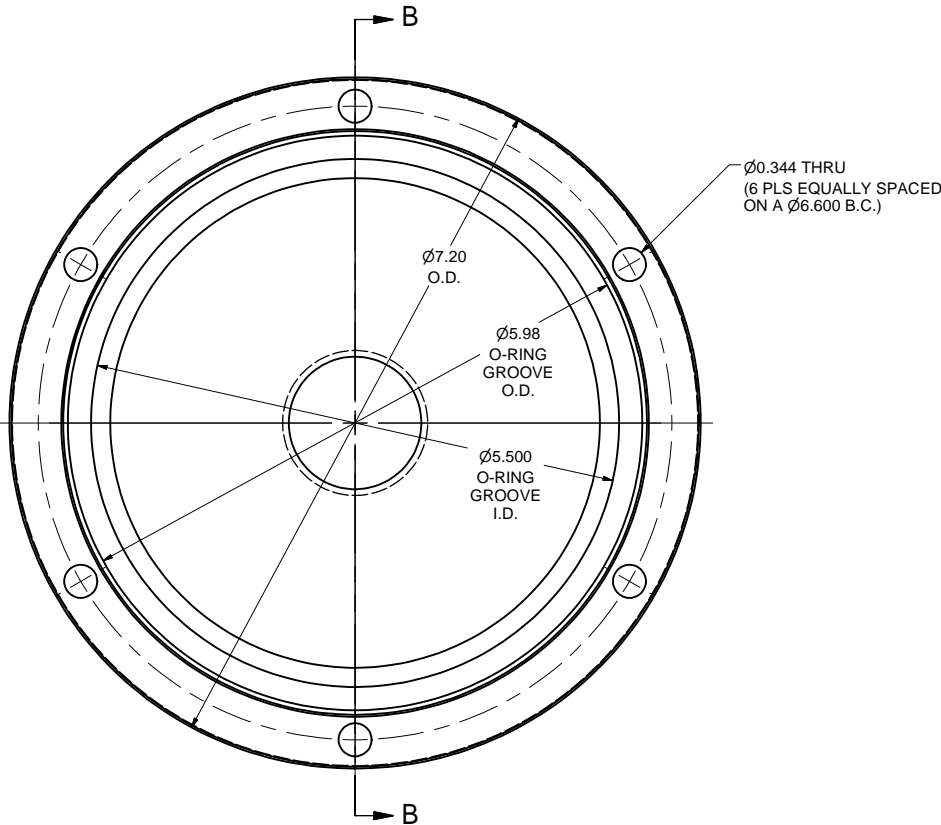
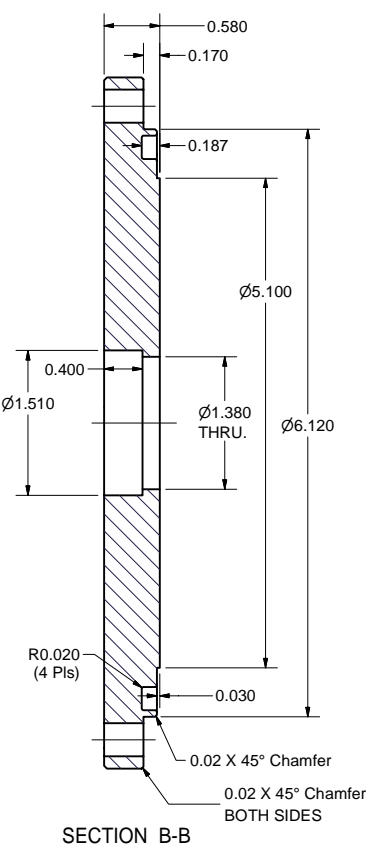
1 VACUUM VESSEL PUMP FLANGE ASSY
FILE NAME: 7102-078
SHEET NO.: 1
DFT. SCALE: 1:1
MATERIAL: AS NOTED
QTY: 1 REQ'D
NOTES:

FOR MACHINING LUBRICANT USE ONLY
ALKALINE DETERGENT LUBRICANT CIMSTAR 40
OR EQUIVALENT APPROVED BY CORNELL LEPP

TECHNICAL RESOURCE APPROVALS REQUIRED BEFORE FABRICATION			
	OK	DATE	N/A
DRAFTING (O'Connell):			
MACHINE SHOP (Kaminski):			
CHEMISTRY (Conklin):			
ELECTRONICS SHOP (Barley):			
FURNACE BRAZING (Sherwood):			
BEAM WELDING (Sears):			
WELDING OTHER (Gallagher):			
UTILITIES INTEGRATION (Gallagher):			
STOCKROOMS (Lockwood):			

	ITEM	DWG. NO.	DESCRIPTION			G1	G2	G3	REMARKS	REV.
							QUANTITY			
D	PRINT DISTR.	PLOT DATE: 3/13/2007 CAD FILE NAME: 7102-078.idw								
SH. NO. 1 OF 2	7102-078 OF 2	CR-1	UNLESS OTHERWISE SPECIFIED:				CORNELL UNIVERSITY Floyd R. Newman Laboratory Ithaca, NY 14853			
			DIMENSIONS ARE IN INCHES:							
			TOLERANCES ON:	LABORATORY FOR ELEMENTARY-PARTICLE PHYSICS						
			FRACTIONS ± 1/64	VACUUM VESSEL PUMP FLANGE ASSY						
ANGLES ± 0.5°	ASSEMBLY DETAILS									
ALL SURFACES 										
REV.			CHECKED BY: JOS	DRAWN BY	DRAWN FOR	DATE	SCALE	D	7102-078	REV.
			APPROVED BY: JOS	JGL	JOS	2/23/2007				
			SH. NO. 1 OF 2							

REVISIONS					
SYM.	ZONE	DESCRIPTION		DATE	APP.
A	D-8	Item 13, Added Dia. 6.120 Dim.		JGL	3/13/07
					TIO



13 GATE VALVE PORT FLANGE
FILE NAME: 7102-078
SHEET NO.: 2
DFT. SCALE: 1:1
MATERIAL: 304 STN. STL.
QTY: 1 PER ASSY
NOTES:

6 GATE VALVE PORT FLANGE WELDMENT
FILE NAME: 7102-078
SHEET NO.: 2
DFT. SCALE: 1:1
MATERIAL: AS NOTED
QTY: 1 PER ASSY
NOTES:

14	PURCHASED	WELD STUB FLANGE 1 1/2"		1		MDC #K150W-LWSA OR EQUIV.	
13	SHEET 2	GATE FLANGE PORT FLANGE		1			
6	SHEET 2	GATE VALVE PORT FLANGE WELDMENT	1	X			
ITEM	DWG. NO.	DESCRIPTION	G1	G2	G3	REMARKS	REV.
			QUANTITY				

FOR MACHINING LUBRICANT USE ONLY
ALKALINE DETERGENT LUBRICANT CIMSTAR 40
OR EQUIVALENT APPROVED BY CORNELL LEPP

TECHNICAL RESOURCE APPROVALS REQUIRED BEFORE FABRICATION			
	OK	DATE	N/A
DRAFTING (O'Connell):			
MACHINE SHOP (Kaminski):			
CHEMISTRY (Conklin):			
ELECTRONICS SHOP (Barley):			
FURNACE BRAZING (Sherwood):			
BEAM WELDING (Sears):			
WELDING OTHER (Gallagher):			
UTILITIES INTEGRATION (Gallagher):			
STOCKROOMS (Lockwood):			

PRINT DISTR.	CR-1
SH. NO. 2 OF 2	REV. A

PLOT DATE: 3/13/2007 CAD FILE NAME: 7102-078.idw		UNLESS OTHERWISE SPECIFIED: DIMENSIONS ARE IN INCHES: TOLERANCES ON: .00 ± .010 .000 ± .005 FRACTIONS ± 1/64 ANGLES ± 0.5° ALL SURFACES		CORNELL UNIVERSITY Floyd R. Newman Laboratory Ithaca, NY 14853	
VACUUM VESSEL PUMP FLANGE ASSY GATE VALVE PORT FLANGE WLDT & DETAIL		DRAWN BY JGL		DRAWN FOR JOS	DATE 2/23/2007
CHECKED BY: JOS APPROVED BY: JOS		SCALE D		7102-078 SH. NO. 2 OF 2	